

ARABELLA
JAGDHOF
RESORT AM FUSCHLSEE



HUNTING FOR THE PERFECT EVENT?

CONFERENCES, CELEBRATIONS,
AND INDULGENCE AT THE ARABELLA JAGDHOF
RESORT

THE PLACE WHERE EVERY EVENT HITS THE MARK

The perfect place for your gathering!
Conference, kick-off meeting, presentation,
or Christmas party.

With the stunning Salzburg mountain backdrop and the shimmering, crystal-clear waters of Lake Fuschl right at our doorstep, we offer the perfect spaces for any occasion. In 12 bright and pillar-free meeting rooms totaling 1,038 m², you'll find ample space for your event. Direct access to the outdoors and some rooms with private terraces invite you to take short breaks in the fresh air.

The highlight is our multifunctional and drive-in room „Fuschlsee,“ which, with an area of 437 m², can accommodate up to 500 people in theater seating. Our 80-hectare nature park surrounding our conference hotel near Salzburg and the nearby Lake Fuschl provide diverse opportunities for incentives and supporting programs.

ON THE HUNT FOR EXCLUSIVITY?

**Book the entire resort for your event and
enjoy absolute exclusivity:**

**143 rooms, 12 event spaces, expansive
outdoor areas, restaurants, and the cozy
spa are available exclusively to you and
your guests.**

**Upon request, we will customize the
entire resort with your individual
branding – for an event that remains
unforgettable.**





SHORT & SWEET

YOUR MEETING VENUE AT LAKE FUSCHL

Surrounded by the natural beauty of the Jagdhof Nature Park, we offer the perfect setting for conferences, seminars, or car presentations – with both indoor and outdoor options to showcase your event perfectly.

TRANSPORT CONNECTIONS

Just 20 km from the city of Salzburg, located in the Salzkammergut region at Lake Fuschl.

- Bus stop with direct connection to Salzburg right at the doorstep.
- 10 minutes to the A1 motorway.
- 20 minutes to the main train station and the center of Salzburg.
- 25 minutes to Salzburg Airport.

ADDITIONAL FACILITIES

- E-charging station
- Free parking & garage
- Helipad

ACCOMMODATION

143 rooms and suites:

- 34 Suites
- Rooms with connecting doors available
- Rooms with balcony or terrace available
- Free, high-speed Wi-Fi

CULINARY DELIGHTS

- Award-winning kitchen team
- Traditional Austrian and international cuisine
- Mediterranean cuisine & bar
- Terraces with view of nature
- Mini-Markt (24/7)

EVENT & MEETING SPACES

1,038 m² total meeting space

- 12 pillar-free meeting rooms
- Adjacent foyer
- Direct access to the outdoors
- 437 m² large conference hall with space for up to 500 people
- Partially drive-in accessible
- Car presentations possible both indoors & outdoors
- Outdoor meetings and breaks

WELLNESS- & SPORTS

800 m² Wellness area:

- Swimming pool
- Finnish sauna, saline steam bath, sanarium, infrared heat cabin, Kneipp/wading pool
- 24-hour fitness center with modern Technogym equipment

ACTIVITIES

- Cultural excursions to the Mozart city of Salzburg (20 km) or to Bad Ischl (35 km)
- (Snowshoe-) hiking
- Nordic walking & jogging
- Fishing
- Watersports
- Cycling
- Cross-country skiing
- SUP and winter SUP
- Ice bathing
- Yoga

NATURE PARK

- Lakeside meadow
- Ridge walk
- Picnic area
- Yoga meadow
- Sheep pasture
- Dog meadow
- Children's playground



Culinary variety at the Arabella Jagdhof Resort:
Hearty breakfast, gourmet cuisine, regional dishes, and
relaxing drinks.
Perfect for every moment!

BREAKFAST RESTAURANT

On the hunt for a hearty breakfast? Our buffet offers everything from cereals, yogurt, fruit juices, cold cuts, cheese, spreads, and fruit to a variety of egg dishes – everything you need for a great start to the day.

WIRTSCHAUS CERVUS

At CERVUS, seasonal dishes await you:
Traditional Austrian specialties, regional fish from the Schloss Fuschl fishery, and modern interpretations of classic recipes.

HALALI BAR

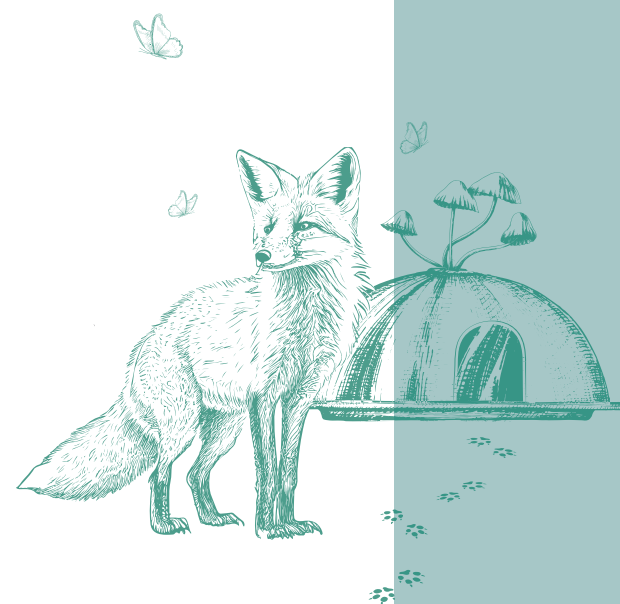
Homemade cocktails crafted by our bar team invite you to enjoy a relaxed after-work drink.
We also serve delicious bar food and tasty dishes perfect for sharing.

WOHNCAFÉ MY DEER

At the Café My Deer, you'll find a cozy living room atmosphere for relaxing, reading, or simply enjoying yourself. You're welcome to consume products from the mini market here.

GRAB & GO: MINIMARKET

Open 24/7 – our mini market offers snacks, drinks, souvenirs, and local delicacies. Perfect for taking away or as a gift.



CULINARY

DELIGHT AROUND THE CLOCK



EXCEPTIONAL CULINARY EXPERIENCES FOR YOUR EVENTS

Business lunches, kitchen parties with live cooking stations, and exclusive gala dinners create culinary highlights that impress.

Handpicked culinary experiences turn every event into a true highlight.

Experience culinary excellence that will turn your event into an unforgettable occasion. Whether it's an intimate private dinner, a business lunch, or a grand gala – our experienced kitchen team ensures top-level enjoyment at every event. Our diverse culinary offerings range from traditional Austrian cuisine to Mediterranean specialties – there's something for every taste. Enjoy these culinary highlights in a relaxed atmosphere on our terraces, which offer breathtaking views of nature and create the perfect setting. No matter the size of your event, our dedicated event team will tailor a custom package that meets your exact needs and desires – from food and beverage selection to decoration and flawless service. Let your event become a celebration of taste – with a team that's passionate about creating exceptional culinary moments.



OUR ROOMS AND SUITES

HÜTTERERHAUS

The design of these rooms is characterized by natural materials and warm earth tones. A photo wallpaper featuring the element of water adds a unique atmosphere to the space. All suites in this building are equipped with air conditioning. Our pool, wellness area, and fitness area are located in the Hüttererhaus.



GUTSHAUS

The guest rooms in the manor house impress with timeless design. The natural wood-look flooring and carefully designed lighting create a harmonious and welcoming atmosphere. All guest rooms in this building are equipped with air conditioning. In this house, you will find the reception, the cozy Café MyDeer, the mini market, and most of the seminar rooms.



JAGDHAUS

Thoughtful accents and stylish furnishings make the guest rooms in the historic hunting lodge inviting and unique. Great care was taken to ensure that the materials and items used create a cozy atmosphere in the rooms. In the hunting lodge, you will find the Cervus tavern, the gourmet restaurant Fuxbau, and the Halali Bar.



A PLACE TO RELAX AND UNWIND

The Arabella Jagdhof Resort at Lake Fuschl offers 143 rooms across three buildings, each with its own unique character – ideal for meetings, conferences, and a relaxing retreat.

Most of the rooms and suites feature a balcony or terrace with breathtaking views of nature. Our family rooms provide space for relaxation, while conference guests enjoy optimal working conditions in rooms equipped with desks. For even more comfort and spaciousness, our suites make every stay unforgettable.

NATURALLY BEAUTIFUL



CONFERENCE PACKAGES



Benefit from our all-inclusive packages for conferences and meetings: modern rooms, top-notch technology, and comprehensive support.
Book now and make your event a success!

HALF-DAY RATE CLASSIC

FROM 10 PEOPLE,
FOR A MAXIMUM OF 5 HOURS,
€ 63,- PER PERSON

- Room rental for the main conference room
- Includes standard equipment such as 1 projector (3200 ANSI lumens), 1 screen, 1 flipchart, 1 pinboard, Notepads & pens
- 1 coffee break with coffee & specialty teas, fruit, and pastries
- Conference beverages in the main room: 1 bottle of mineral water per person
- 1 lunch as a business lunch menu for up to 20 people, or business lunch buffet chosen by the head chef for 20 or more guests

FULL-DAY RATE CLASSIC

FROM 10 PEOPLE,
FOR A MAXIMUM OF 9 HOURS,
€ 76,- PER PERSON

- Room rental for the main conference room
- Includes standard equipment such as 1 projector (3200 ANSI lumens), 1 screen, 1 flipchart, 1 pinboard, Notepads & pens
- 2 coffee breaks with coffee & specialty teas, fruit, and pastries
- Conference beverages in the main room: 2 bottle of mineral water per person
- 1 lunch as a business lunch menu for up to 20 people, or business lunch buffet chosen by the head chef for 20 or more guests

HALF-DAY RATE ALL INCLUSIVE

FROM 10 PEOPLE,
FOR A MAXIMUM OF 5 HOURS,
€ 83,- PER PERSON

- Room rental for the main conference room
- Includes standard equipment such as 1 projector (3200 ANSI lumens), 1 screen, 1 flipchart, 1 pinboard, Notepads & pens
- 1 coffee break with coffee & specialty teas, fruit, and pastries
- Unlimited non-alcoholic conference beverages in the main conference room
- 1 lunch as a business lunch menu for up to 20 people, or business lunch buffet chosen by the head chef for 20 or more guests

FULL-DAY RATE ALL INCLUSIVE

FROM 10 PEOPLE,
FOR A MAXIMUM OF 9 HOURS,
€ 76,- PER PERSON

- Room rental for the main conference room
- Includes standard equipment such as 1 projector (3200 ANSI lumens), 1 screen, 1 flipchart, 1 pinboard, Notepads & pens
- 2 coffee breaks with coffee & specialty teas, fruit, and pastries
- Unlimited non-alcoholic conference beverages in the main conference room
- 1 lunch as a business lunch menu for up to 20 people, or business lunch buffet chosen by the head chef for 20 or more guests

CONFERENCE ROOMS WITH STYLE



Our versatile event spaces with state-of-the-art technology provide the ideal setting for any occasion. Flexible and adaptable, they create the perfect ambiance for your event.

CONFERENCE ROOMS	Floor	Parliamentary style	U-shape	Theatre style	Conference style	Circle of chairs	Banquet style	area, m ²	length, m	width, m	Room height at centre, m	Wall height, m	Full-day rental in € (up to 9h)	Half-day rental in € (up to 5h)
Fuschlsee 1-3	-1	300	x	500	x	x	300	437	29,8	14,82	3,75	3,25	2.600	2.300
Fuschlsee 1-2	-1	150	54	280	x	x	170	294	20,15	14,82	3,75	3,25	1.700	1.700
Fuschlsee 1	-1	80	36	150	x	44	80	146	14,82	9,9	3,75	3,25	1000	600
Fuschlsee 2	-1	80	36	150	x	44	80	148	14,82	10	3,75	3,25	1000	600
Fuschlsee 3	-1	70	32	140	x	44	70	143	14,82	9,7	3,75	3,25	1000	600
Toplitzsee	-1	38	22	50	20	30	40	77	9,85	7,85	3,5	3,1	400	250
Traunsee 1	0	32	22	72	x	30	50	88	9,85	8,95	3	2,65	650	350
Traunsee 2	0	32	22	72	x	30	50	88	9,85	8,95	3	2,65	650	350
Traunsee 1-2	0	88	46	180	x	60	120	176	19,75	8,95	3	2,65	1100	650
Traunsee 1/3	0	24	16	48	20	22	30	66	8,95	7,45	3	2,65	550	250
Traunsee 2/3	0	48	28	96	x	40	60	110	12,2	8,95	3	2,65	700	450
Wolfgangsee	0	40	26	60	32	35	60	120	13,12	9,08	3	2,75	750	450
Wallersee	0	x	x	x	10	x	x	30	8,35	3,7	2,9	2,45	250	150
Eibensee 1/2	0	x	x	x	14	x	x	48	9,8	5,25	3	2,65	350	200
Filblingsee 1	-1	20	18	42	10	18	x	50	8,65	5,6	2,9	2,45	350	250
Filblingsee 2	-1	20	18	42	10	18	x	50	8,65	5,6	2,9	2,45	350	250
Filblingsee 3	-1	20	18	42	10	18	x	50	8,65	5,6	2,9	2,45	350	250
Filblingsee 1-2	-1	48	24	80	x	40	60	100	11,5	7,55	2,9	2,45	650	450
Filblingsee 1-3	-1	74	38	140	x	60	80	150	17,55	7,55	2,9	2,45	1000	600

AUDIOVISUAL EQUIPMENT

- Wired internet connection
- TV
- Overhead projector
- Wi-Fi

ADDITIONAL EQUIPMENT & ACCESSORIES

- Flipchart and markers
- Pens/notepads
- Tables
- Signage
- Business Services
- Computer
- Fax service
- Copy service
- Mail/package handling

EVENT TECHNOLOGY

Our partner VTG provides state-of-the-art event technology.

For info & contact:

www.veranstaltungstechnik.com

FLORAL SERVICES

Info & contact:

www.brandstaetter.design

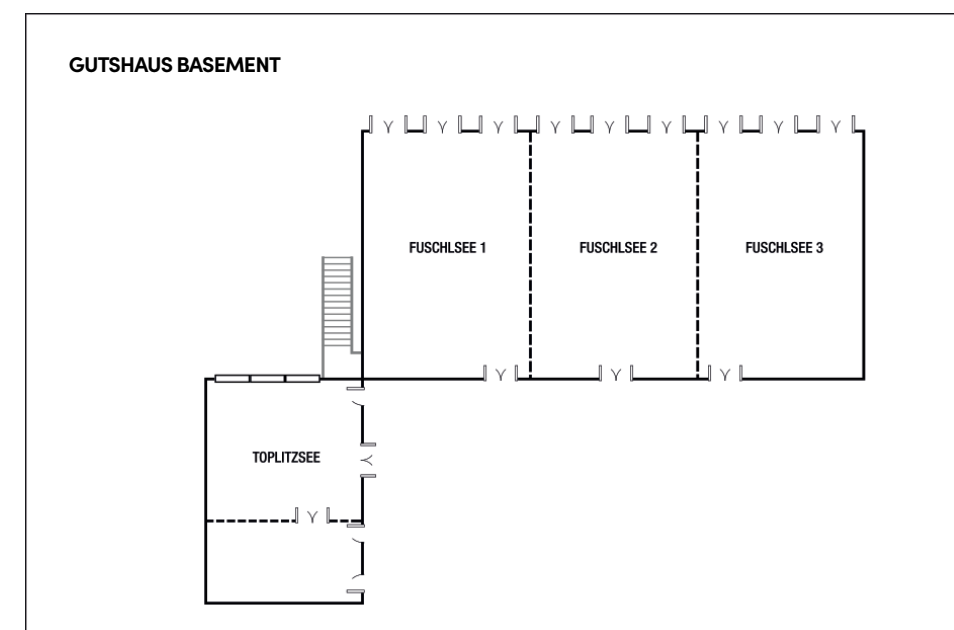


FUSCHLSEE 1,2,3

The largest conference room at the Jagdhof offers 437 m² of space for all kinds of events, from gala dinners to product presentations. Pillar-free and highly flexible, it can be divided into three rooms of 145 m² each. A large window front provides a view of the nature park. State-of-the-art event technology, a spacious 400 m² foyer for breaks, and direct access to the outdoor area ensure maximum comfort – even for large events with up to 300 guests.

CAPACITY

- **Parliamentary style:** 70–300 people
- **U-shape:** 32–54 people
- **Theater style:** 140–500 people
- **Circle of chairs:** 44 people
- **Banquet style:** 70–300 people

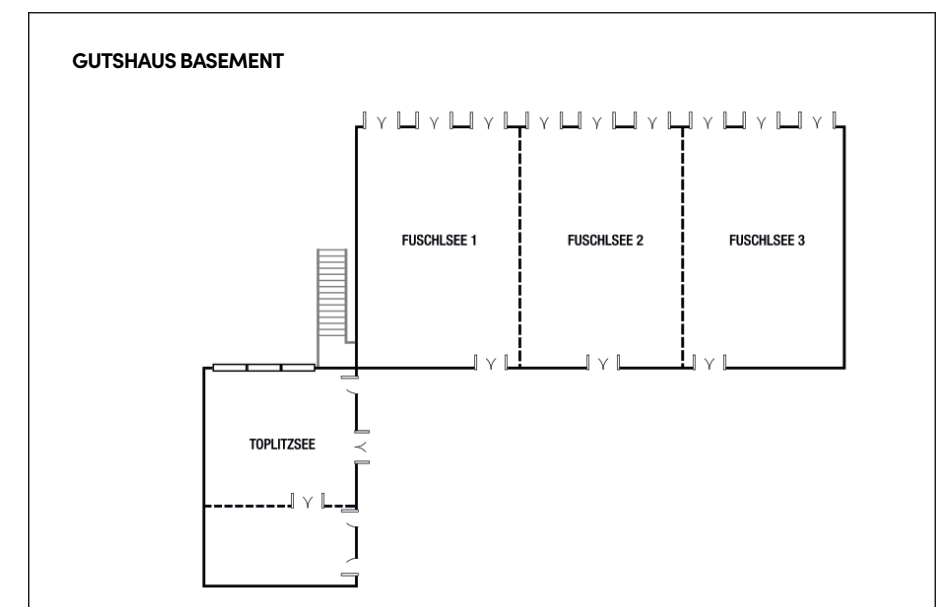


TOPLITZSEE

Perfect as a breakout room for the Fuschlsee Hall, the Toplitzsee rooms offer a stylish setting with natural daylight, refined wooden elements, and an elegant red carpet. Accessible via the adjacent foyer, sound-absorbing curtains and sophisticated wall paneling create a calm atmosphere – ideal for focused discussions and creative breaks.

CAPACITY

- **Parliamentary style:** 38 people
- **U-shape:** 22 people
- **Theater style:** 50 people
- **Conference style:** 20 people
- **Circle of chairs:** 30 people
- **Banquet style:** 40 people



TRAUNSEE 1, 2

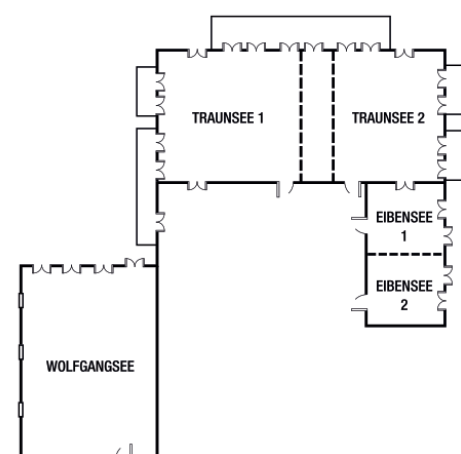
With 176 m², or divisible into two bright, light-filled rooms of 88 m² each, Traunsee 1 and 2 offer direct access to the terrace and a beautiful view of nature. The modern, welcoming atmosphere in shades of blue and beige, complemented by elegant taupe curtains, makes it the perfect setting for inspiring training sessions, seminars, and presentations.

CAPACITY

- **Parliamentary style:** 24-88 people
- **U-shape:** 16-46 people
- **Theater style:** 48-180 people
- **Conference style:** 20 people
- **Circle of chairs:** 22-60 people
- **Banquet style:** 30-120 people



GUTSHAUS GROUND FLOOR





EIBENSEE 1, 2

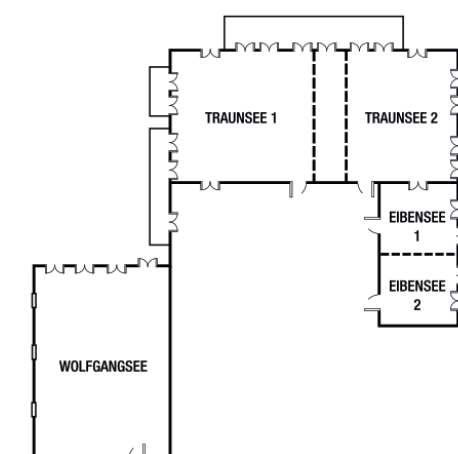
With 48 m², Eibensee 1–2 are ideal for small board meetings and executive sessions. The room, with its private feel and direct access to the terrace, offers the perfect setting when discretion is essential. Elegant, stylish interiors create an intimate atmosphere for confidential discussions and strategic decisions.

CAPACITY

- Conference style: 14 people



GUTSHAUS GROUND FLOOR



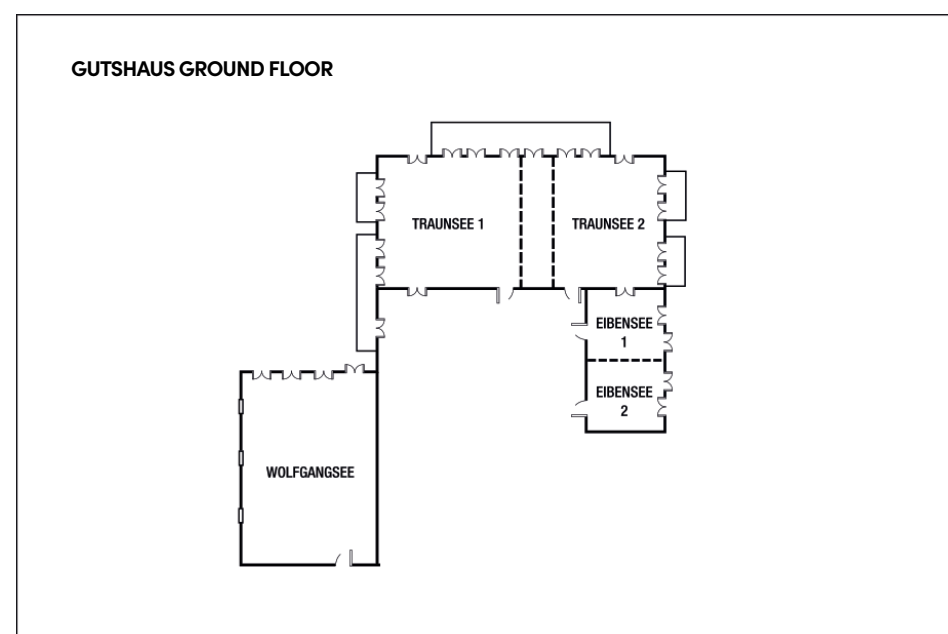
WOLFGANGSEE

With 120 m², the Wolfgangsee room offers a spacious, light-filled space with direct access to the outdoors and views of nature. Natural colors, harmoniously coordinated textiles, and furnishings create an exclusive and sophisticated atmosphere. The room can be fully darkened if needed, making it ideal for a wide range of events in an upscale setting.



CAPACITY

- **Parliamentary style:** 40 people
- **U-shape:** 26 people
- **Theater style:** 60 people
- **Conference style:** 32 people
- **Circle of chairs:** 26 people
- **Banquet style:** 60 people



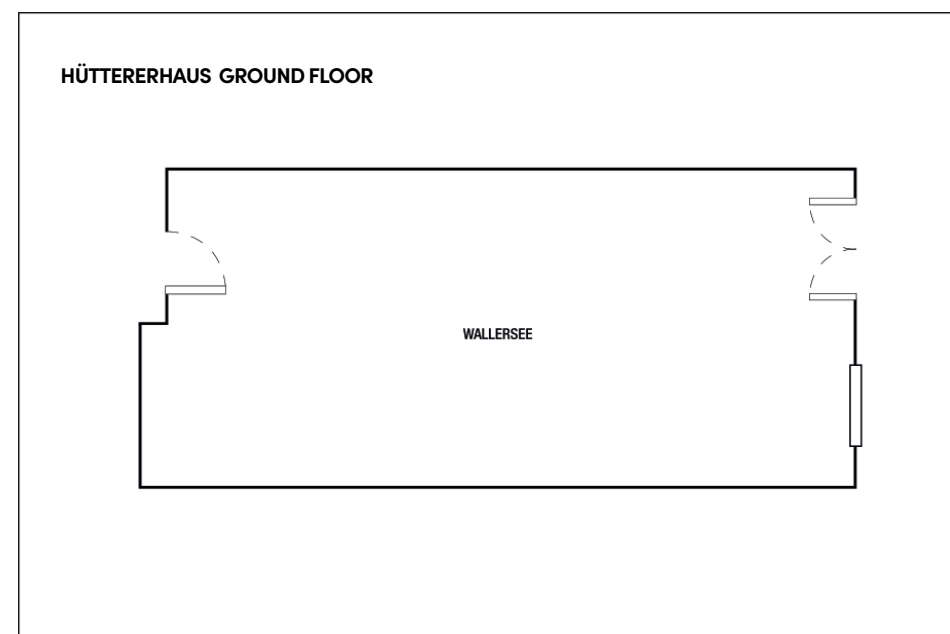


WALLERSEE

The bright, stylishly designed room offers 30 m² of space and provides the ideal setting for short, productive meetings and board sessions. The modern interior features white accents, complemented by a long conference table and elegant white shell chairs. A deep green carpet echoes the surrounding nature, creating a calm and inspiring work atmosphere.

CAPACITY

- **Conference style:** 10 people



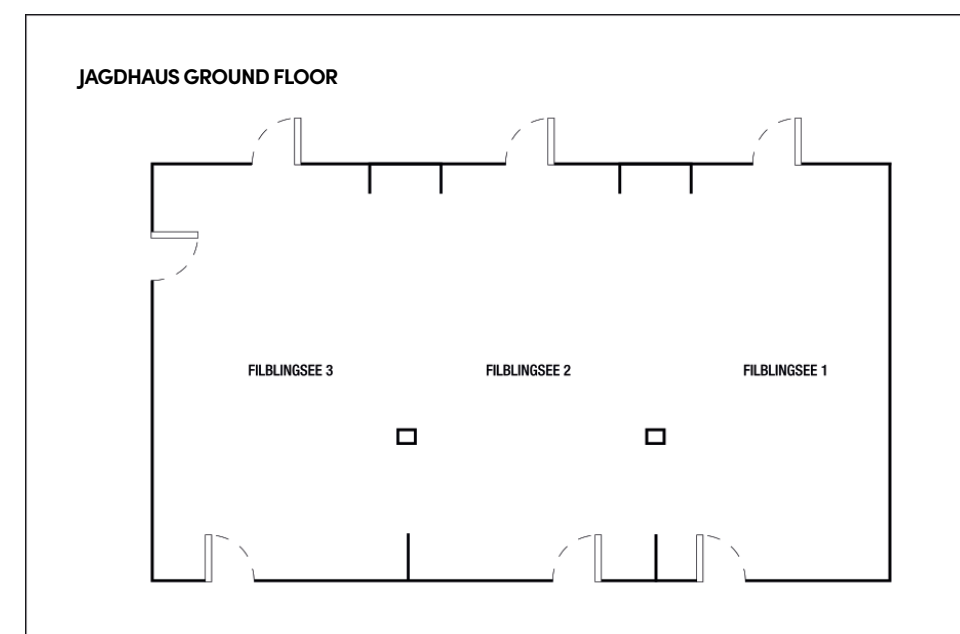
FILBLINGSEE 1,2,3

Covering a total of 150 m², Filblingsee 1-3 provide a bright and inviting setting for a wide range of occasions. With direct access to the terrace, these rooms are ideal for smaller breakout sessions. Elegant parquet flooring and walls made of high-quality wood paneling or stone create a stylish, nature-inspired atmosphere that encourages creativity and interaction.



CAPACITY

- **Parliamentary style:** 20-74 people
- **U-shape:** 18-38 people
- **Theater style:** 42-140 people
- **Conference style:** 10 people
- **Circle of chairs:** 18-60 people
- **Banquet style:** 60-80 people



YOUR PRODUCT – PERFECTLY STAGED

Product presentations at
Arabella Jagdhof – the perfect
stage, both indoor and outdoor.

At Arabella Jagdhof, your product presentations find the perfect setting – indoors or outdoors. In the spacious Fuschlsee 1–3 event rooms, even cars can be showcased in style, with direct, ground-level access to the extensive terrace for seamless transitions between indoor and outdoor presentations.

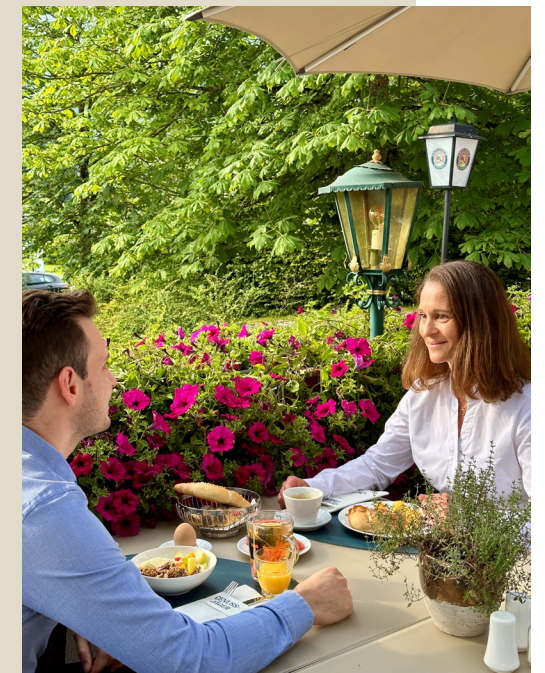
E-charging stations at the resort provide flexible charging options, ideal for modern mobility solutions. The stunning surroundings also invite exciting car rallies, making your event a unique experience for your guests.



SCHÜTZEN-STUBE

Are you hunting for a hearty breakfast buffet? The buffet ranges from cereals, yogurt, and fruit juices to a variety of cold cuts and cheeses, spreads, fresh fruit and vegetables, as well as different egg dishes. Everything you need for a good start to a productive day.

Depending on the event, the Schützenstube is also set up accordingly for lunch or dinner and – depending on the group size – is used together with the Cervus restaurant.



HALALI BAR

The perfect place for a sundowner, after-work drink, a relaxed dinner, or to wind down the evening. Our bar team creates unique cocktails and non-alcoholic drinks – some made with ingredients from our own herb garden. We also serve delicious bar food and shareable snacks. In summer, the terrace with its green views invites you to linger, while in winter, cozy armchairs offer a warm retreat.

For larger groups, extended bar evenings, or exclusive drinks, the bar can be flexibly expanded by using the directly adjacent Filblingsee 1–3 rooms if needed.



WIRTSHAUS CERVUS

On the hunt for good food? At the restaurant Cervus, you can expect a rustic evening menu. We serve traditional dishes made with seasonal, high-quality ingredients from Austria – freshly reinterpreted. **Just follow your nose.**



PAULANER BEERGARDEN

Experience „Austrian-Bavarian Friendship,“The Paulaner beergarden at the Arabella Jagdhof Resort combines traditional Bavarian beergarden culture with culinary specialties from the Salzkammergut region.

With around 100 seats and a breathtaking view of nature and the mountains, this cozy meeting place invites guests to relax, enjoy, and spend time together.

The menu features regional classics such as Salzburger sausage salad, traditional bavarian white sausage from butcher Ablinger, and creamy Obatzda (cheese spread). The offerings are complemented by Paulaner beer specialties and other refreshing beverages.

Our beergarden not only provides a welcoming atmosphere to linger, but also the perfect setting for special occasions. Whether private celebrations with family and friends or relaxed corporate events – the beergarden is also available for rent.

We are happy to assist you with the planning and organization of your event – personally, reliably, and tailored to your individual wishes.



ON THE HUNT FOR EXPERIENCES?

Unforgettable experiences for teams seeking individual and enriching events. Arabella Jagdhof and our regional partners specialize in tailor-made team events. The range of offerings extends from sporting activities to unique team-building experiences.

YOGA-MEETING BREAK

Use the yoga meeting break to regenerate body and mind!

BALANCE: Start with a 1-hour yoga session and find your inner center.

RECHARGE: Enjoy a healthy snack and a refreshing energy booster to recharge.

RELAX: Outdoors in nature or in the meeting room – flexibly decide where you can relax best.

From €29.00 per person

EVENTS WITH MONTÉE

For unforgettable seminars and corporate events, we offer tailor-made team-building ideas together with our partner Montée.

From outdoor adventures and offroad events directly on the hotel grounds or in the nature park to sustainable corporate events. Popular activities like bridge building, soapbox racing, and raft building guarantee fun and unforgettable experiences. Inspiring incentives and shows turn your employees and clients into true fans.

Contact Montée:
www.montee.com

STAND-UP-PADDLING WITH SUP-BOX

Experience a special kind of team building: stand-up paddling on Lake Fuschl! Find balance together, have fun, and enjoy nature. For stronger team spirit and unforgettable moments on the water.

GROUP OFFER:

From 3 people, up to approx. 40 participants possible (larger groups on request), duration: approx. 2–3 hours, depending on group size.

Private SUP lessons for individuals or groups can be booked directly with SUP Box.

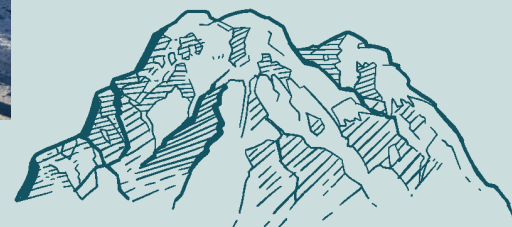
Contact SUP Box:
www.sup-box.at

LAKE PARADISE SALZKAMMERGUT

Our surrounding lakes offer countless opportunities for self-guided adventures. Enjoy a boat trip on Lake Fuschl or Wolfgangsee, explore the nearby mountain lakes on a hike, or discover Lake Mondsee on an e-bike tour.

Information at:
www.salzkammergut.at





Arabella Jagdhof Fuschlsee offers ideal winter activities for events and functions in a stunning setting.

WINTER ACTIVITIES AT ARABELLA JAGDHOF

Team building with ice stock sport, romantic torchlight hikes, or thrilling sled rides – every team will find the perfect program here. Take advantage of the winter atmosphere at Lake Fuschl to motivate your team and strengthen team spirit.

Info & contact:

<https://fuschlsee.salzkammergut.at/>

NORDIC FUN

Our partner Nordic Fun offers sports such as cross-country skiing, snowshoe hiking, biathlon, and ice skating. With equipment rental, courses, and guided tours, individuals, groups, and families can experience unforgettable adventures in the Austrian Alps. Book your experience now!

Info & contact:

www.nordic-fun.at

WINTER ACTIVITIES WITH MONTÉE

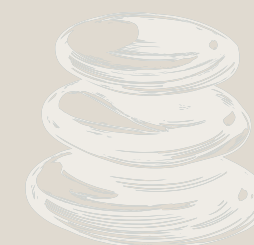
Montée offers tailor-made winter activities that combine team building and adventure. Experience unforgettable programs such as ice sculpture carving, sled races, e-moonbike tours, snow sculpture building, and igloo construction. Professional supervision ensures inspiring experiences that your team will remember positively.

Info & contact:

<https://www.montee.com>



After the intense phases of a conference, our extensive wellness program provides the perfect opportunity to bring body and mind into harmony. Our spa is at your disposal for a personal retreat.



Soothing sauna sessions and a varied fitness program – boost your performance and concentration for the next seminar day.

Wellness

Experience relaxation in our 800 m² wellness area featuring a sauna landscape, a 15-meter indoor pool, a Kneipp basin, and a large outdoor lawn for lounging. Unwind in the brine steam bath, infrared heat cabin, sanarium, or Finnish sauna, and recharge in the relaxation room with a salt stone wall.

Lakeside Meadow

Just a 10-minute walk through the forest lies our private lakeside meadow – a peaceful retreat on the crystal-clear Lake Fuschl. Enjoy sun, shade, and relaxation right in the heart of nature.

Fitness

Sports enthusiasts can train around the clock in the bright, light-filled fitness studio equipped with modern Technogym machines and Kinesis training equipment to improve strength and endurance.

SUSTAINABILITY WITH PASSION

At Arabella Jagdhof, we live sustainability on all levels and embrace values that shape our actions and inspire us anew every day. Our goal: a corporate culture that not only advocates responsibility and mindfulness but actively puts them into practice.

BONVOY

Looking for exclusive benefits?
With Marriott Bonvoy, you earn points for booked meetings and events.
Find more information and register for free here:



THE NEW JAGDHOF NATURE PARK

At Arabella Jagdhof, a natural paradise has been created: a renaturation project by Schloss Fuschl Betriebe on the former golf course. Today, the nature park offers biotopes, hiking trails, a lake meadow, dog meadow, viewpoints, yoga meadow, picnic spots, sheep pasture, and organic farming—a place for relaxation and sensory experiences.

REGIONAL DELICACIES FROM SUSTAINABLE PRODUCTION

Regional & sustainable: Our culinary offerings are based on products from the surrounding area – featuring homemade honey from our own beekeeping and sustainably caught fish from the Schloss Fuschl fishery.

SOCIAL COMMITMENT

Commitment to the region and employees: Schloss Fuschl Betriebe GmbH regularly supports social projects and is building a new staff housing together with Heimat Österreich in Hof near Salzburg, set to open at the end of 2025. The goal: better living and working conditions and stronger regional responsibility.

EFFICIENT USE OF RESOURCES

Conscious resource use: With our digital guest directory SuitePad, we avoid paper prints. We focus on waste reduction, demand-based hotel laundry, economical use of materials, and efficiently dosed cleaning agents.

ENVIRONMENTALLY FRIENDLY ENERGY SUPPLY

Our own wood chip heating system covers around 80% of our heating needs and strengthens our energy independence. Modern LED technology helps save electricity and reduce our carbon footprint. Since spring 2024, we also use the reactivated Diana spring to supply fresh spring water at the Arabella Jagdhof Resort.



Please share the initial details of your event with us, and our dedicated event and F&B team will get back to you promptly. We are happy to advise you personally and support you with your planning.

We look forward to making your event a great success together!

Contact:
events-jagdhof@arabella.com
Tel.: 0043 6229 2372 5500

On the hunt for more insights and the latest news?
Then follow us on social media!



**EXPERIENCE.
DISCOVER.
INSPIRE.**

Arabella Jagdhof Resort am Fuschlsee

Schloss-Straße 1

5322 Hof bei Salzburg

06229 2372 2585 5500

events-jagdhof@arabella.com

www.arabella-jagdhof.com